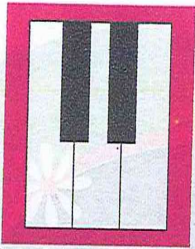


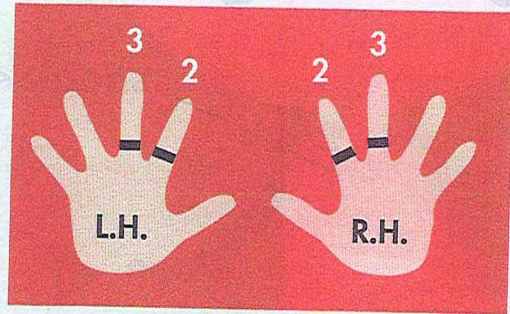
Monster Bus Driver

Imitating Rhythms on Black Keys

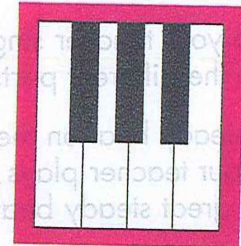
1. On any 2-black-keys:



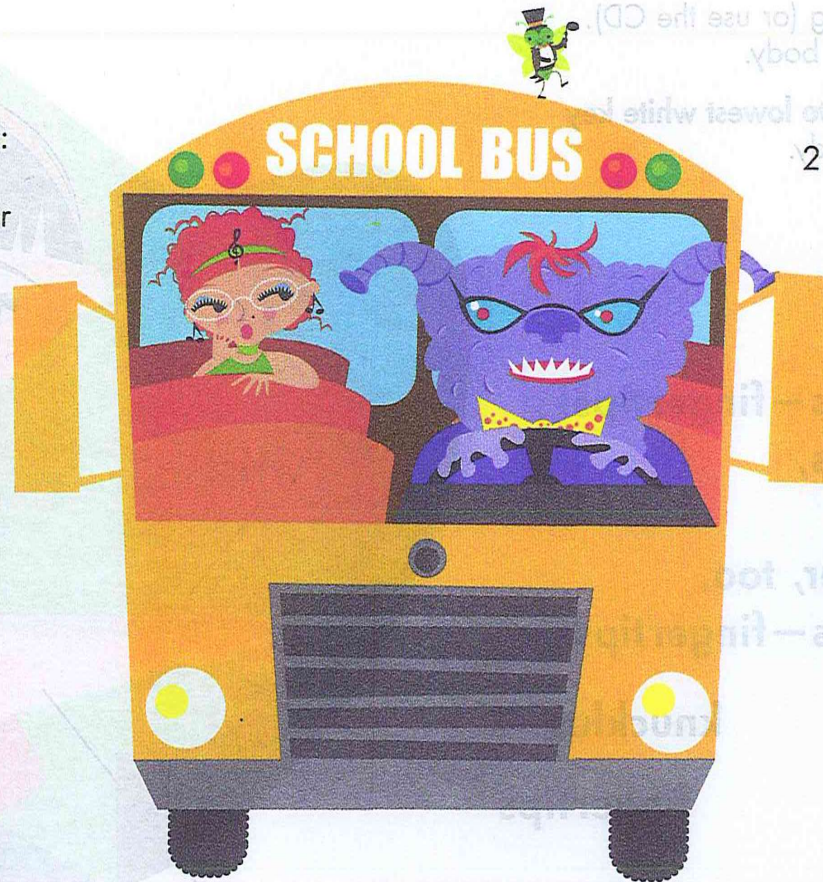
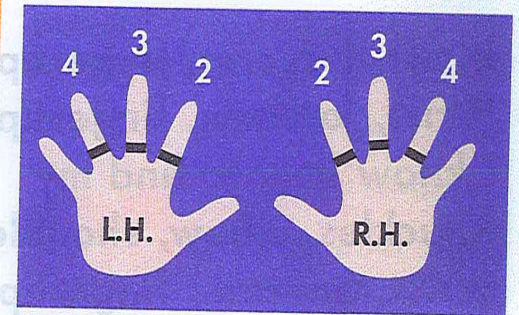
Imitate the horn sounds your teacher plays. Use L.H. or R.H. fingers 2-3.



2. On any 3-black-keys:



Imitate the horn sounds your teacher plays. Use L.H. or R.H. fingers 2-3-4.



Teacher plays black-key rhythms for students to imitate. (Student plays 1 octave LOWER or HIGHER than the teacher.)



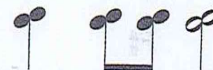
1a.



1b.



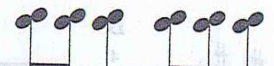
1c.



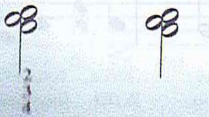
1d.



1e.



2a.



2b.



2c.



2d.



2e.



Can you find Tap?